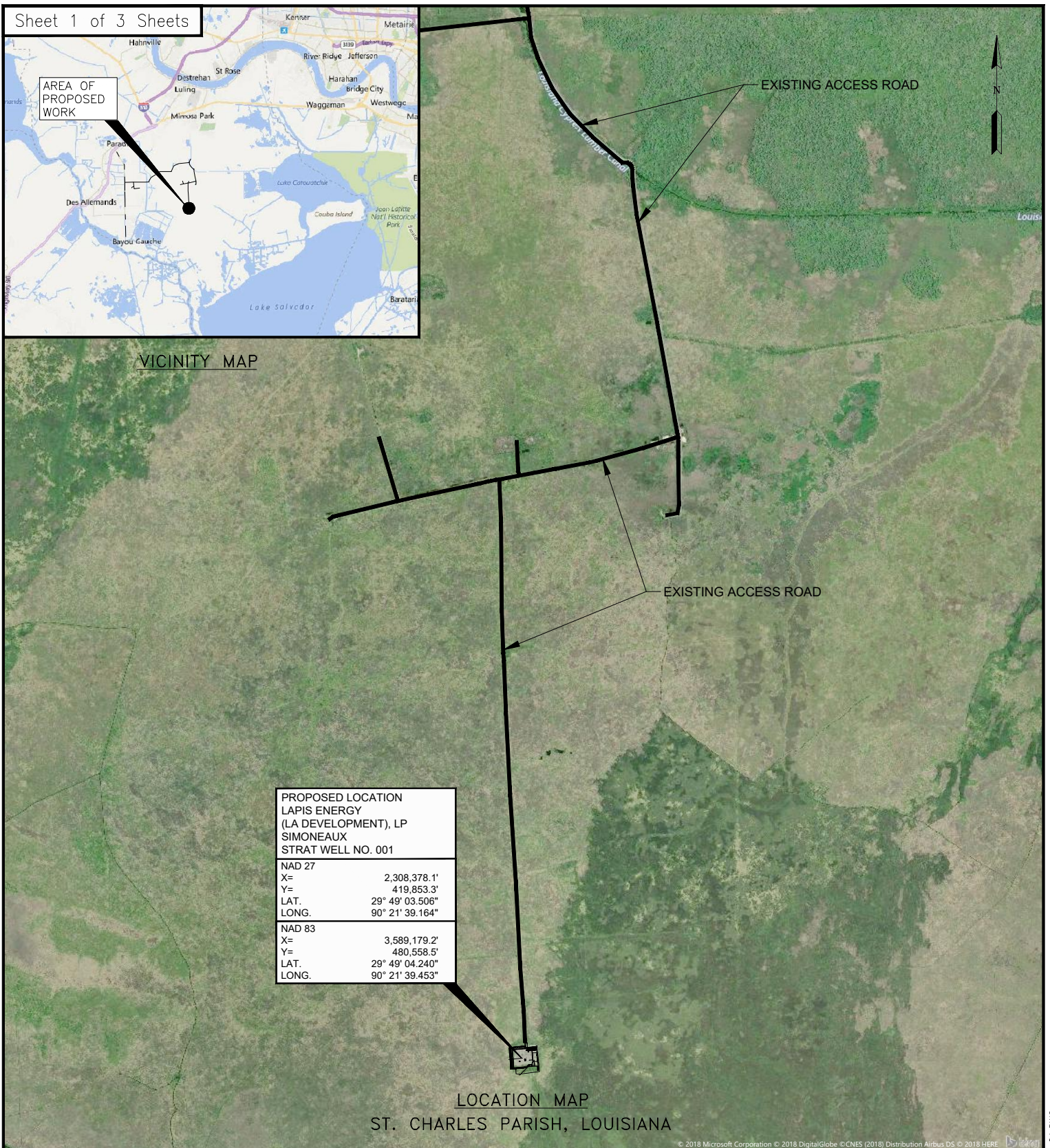


VICINITY MAP



PROPOSED LOCATION LAPIS ENERGY (LA DEVELOPMENT), LP SIMONEAUX STRAT WELL NO. 001	
NAD 27	
X=	2,308,378.1'
Y=	419,853.3'
LAT.	29° 49' 03.506"
LONG.	90° 21' 39.164"
NAD 83	
X=	3,589,179.2'
Y=	480,558.5'
LAT.	29° 49' 04.240"
LONG.	90° 21' 39.453"

LOCATION MAP

ST. CHARLES PARISH, LOUISIANA

NOTE:






PROJECT CONSULTING SERVICES, INC.

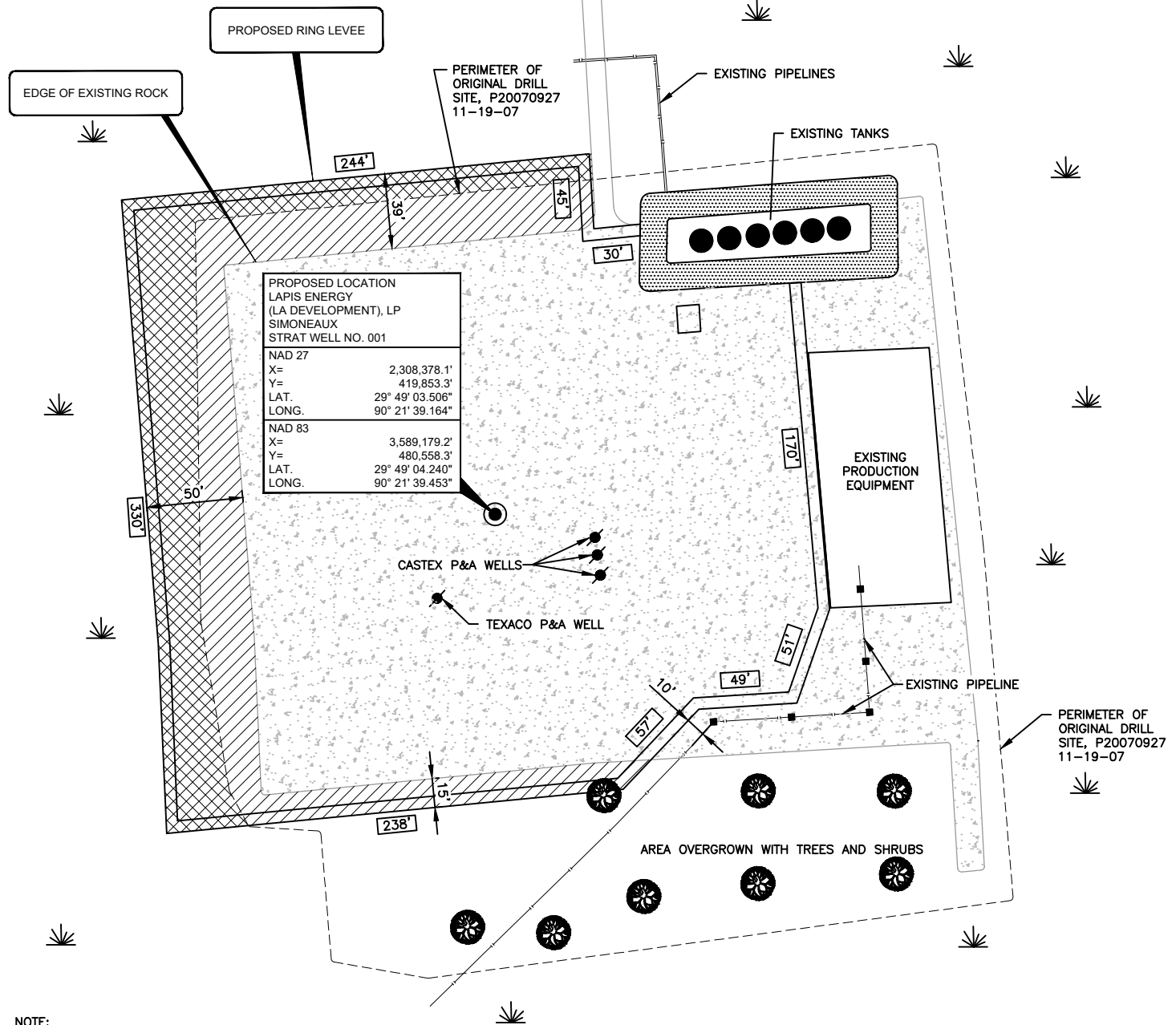
3300 WEST ESPLANADE AVE., S., SUITE 500
METAIRIE, LA 70002-7406
(504) 833-5321 Fax (504) 833-4940
www.projectconsulting.com

REV.	DESCRIPTION	BY	DATE	APP.

LAPIS ENERGY (LA DEVELOPMENT), LP PROPOSED SIMONEAUX STRAT WELL NO. 001 SECTION, 32 T14S-R21E ST. CHARLES PARISH, LOUISIANA	
DRAWN BY: PCS	CHK'D. BY: RL
DATE: 07-11-24	APPRV. BY:
DWG. NO. PERMIT-01	REV A

ST. CHARLES PARISH, LOUISIANA
BOUTTE FIELD, SEC 32, T14S-R21E

-  = PREVIOUSLY PERMITTED WELL PAD - 0.31 TOTAL ACRES
-  = NEW IMPACTS - 0.30 TOTAL ACRES
-  = EXISTING ROCK PAD - 2.26 TOTAL ACRES



NOTE:
EXPANDED AREA FILL TO BE REMOVED FOLLOWING THE ACTIVITY. THE AREA WILL BE RESTORED TO PRE-PROJECT ELEVATIONS AND PROVIDED A COMPLETED 1-YEAR GROWING SEASON TO RECOVER.

NOTE:

1. GRID PROJECTION BASED ON NAD 27 & 83 LOUISIANA STATE PLANE, SOUTH ZONE, US FEET, VERTICAL DATUM NAVD 88.



PROJECT CONSULTING SERVICES, INC.

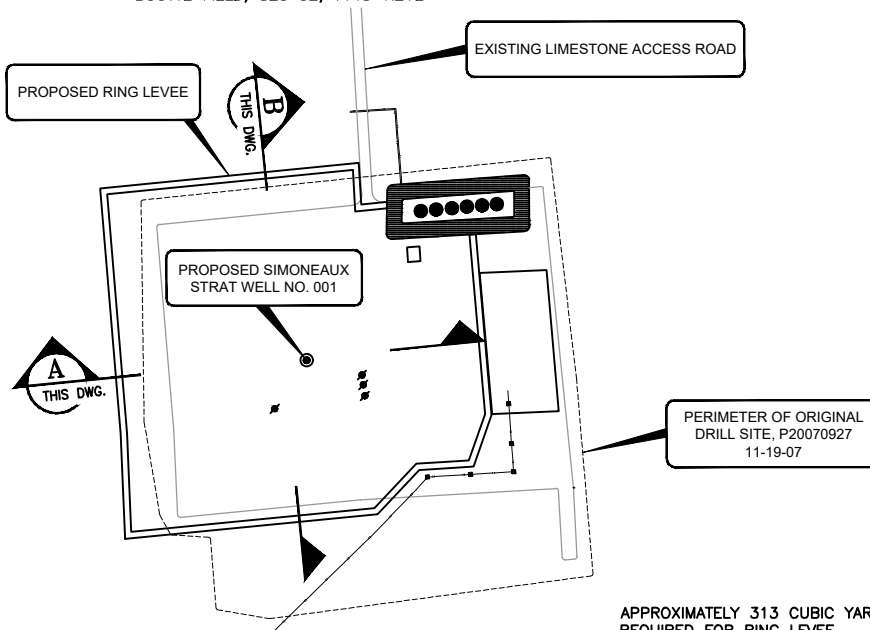
3300 WEST ESPLANADE AVE., S., SUITE 500
METairie, LA 70002-7406
(504) 833-5321 Fax (504) 833-4940
www.projectconsulting.com

REV.	DESCRIPTION	BY	DATE	APP.	LAPIS ENERGY (LA DEVELOPMENT), LP PROPOSED SIMONEAUX STRAT WELL NO. 001 SECTION, 32 T14S-R21E ST. CHARLES PARISH, LOUISIANA	
					DRAWN BY: PCS	CHK'D. BY: RL
					DATE: 07-11-24	APPRV. BY:
					DWG. NO. PERMIT-02	
					REV	A

ST. CHARLES PARISH, LOUISIANA
BOUTTE FIELD, SEC 32, T14S-R21E

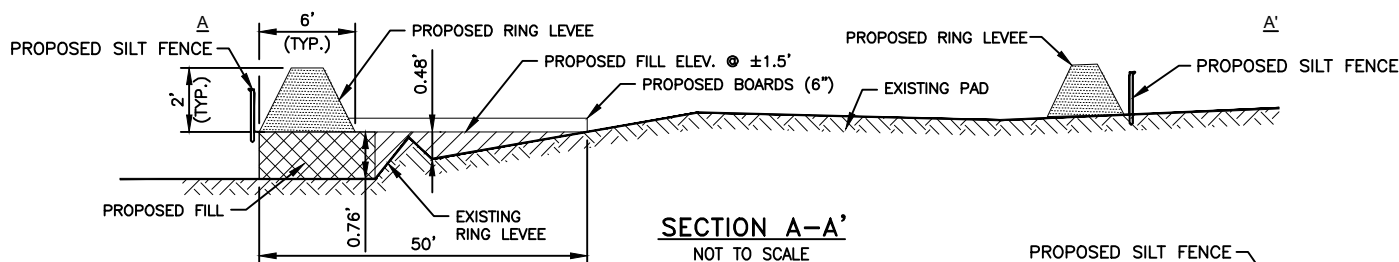
NOTES:

1. MATERIAL FOR DRILLSITE RING LEVEES WILL BE HAULED IN FROM AN OFFSITE LOCATION.
2. A CLOSED MUD SYSTEM WILL BE USED.
3. SILT FENCING OR OTHER SUITABLE MATERIAL WILL BE PLACED AROUND THE PERIMETER OF THE SITE TO PREVENT STORM WATER RUNOFF.
4. AS-BUILT DRAWINGS AND/OR PLATS SHALL HAVE WRITTEN ON THEM THE DATE OF COMPLETION OF SAID ACTIVITIES AND SHALL BE SUBMITTED TO THE LOUISIANA DEPARTMENT OF NATURAL RESOURCES, OFFICE OF COASTAL MANAGEMENT, P. O. BOX 44487, BATON ROUGE, LA 70804-4487 WITHIN 30 DAYS FOLLOWING PROJECT COMPLETION.
5. ALL STRUCTURES BUILT UNDER THE AUTHORIZATION AND CONDITIONS OF THIS PERMIT SHALL BE REMOVED FROM THE SITE WITHIN 120 DAYS OF ABANDONMENT OF THE FACILITIES FOR THE HEREIN PERMITTED USE, OR WHEN THESE STRUCTURES FALL INTO A STATE OF DISREPAIR SUCH THAT THEY CAN NO LONGER FUNCTION AS INTENDED. THIS CONDITION DOES NOT PRECLUDE THE NECESSITY FOR REVISING THE CURRENT PERMIT OR OBTAINING A SEPARATE COASTAL USE PERMIT, SHOULD ONE BE REQUIRED, FOR SUCH REMOVAL ACTIVITIES.
6. IN ORDER TO ENSURE THE SAFETY OF ALL PARTIES, THE PERMITTEE SHALL CONTACT THE LOUISIANA ONE CALL SYSTEM (1-800-272-3020) A MINIMUM OF 48 HOURS PRIOR TO THE COMMENCEMENT OF ANY EXCAVATION (DIGGING, DREDGING, JETTING, ETC.) OR DEMOLITION ACTIVITY.
7. EXPANDED AREA FILL TO BE REMOVED FOLLOWING THE ACTIVITY. THE AREA WILL BE RESTORED TO PRE-PROJECT ELEVATIONS AND PROVIDED A COMPLETED 1-YEAR GROWING SEASON TO RECOVER.

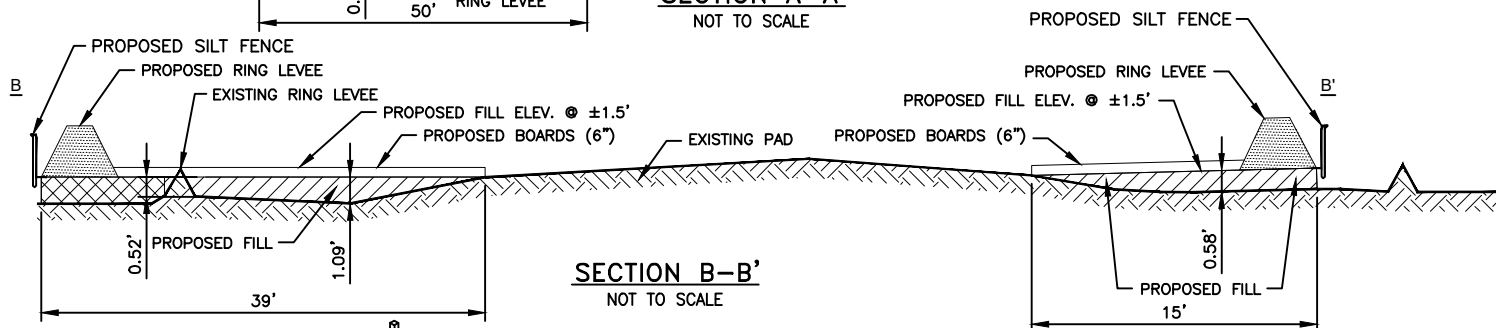


TYPICAL DRILL SITE PLAN
NOT TO SCALE

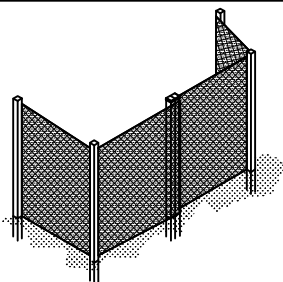
APPROXIMATELY 313 CUBIC YARDS OF FILL
REQUIRED FOR RING LEVEE.
APPROXIMATELY 383 CUBIC YARDS OF FILL
REQUIRED FOR PREVIOUSLY PERMITTED DRILL SITE.
APPROXIMATELY 367 CUBIC YARDS OF FILL
REQUIRED FOR PAD EXPANSION IN MARSH.



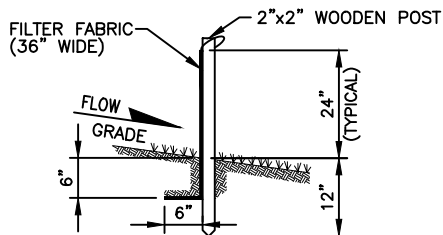
SECTION A-A'
NOT TO SCALE



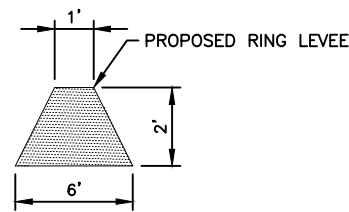
SECTION B-B'
NOT TO SCALE



SILT FENCE DETAIL
NOT TO SCALE



SILT FENCE CROSS SECTION
NOT TO SCALE



RING LEVEE DETAIL
NOT TO SCALE

NOTE:

REV.	DESCRIPTION	BY	DATE	APP.

PROJECT CONSULTING SERVICES, INC.
3300 WEST ESPLANADE AVE., S., SUITE 500
METairie, LA 70002-7406
(504) 833-5321 Fax (504) 833-4940
www.projectconsulting.com

LAPIS ENERGY (LA DEVELOPMENT), LP
PROPOSED SIMONEAUX STRAT WELL NO. 001
SECTION, 32 T14S-R21E
ST. CHARLES PARISH, LOUISIANA
DRAWN BY: PCS CHK'D. BY: RL
DATE: 07-11-24 APPRV. BY:
DWG. NO. PERMIT-03